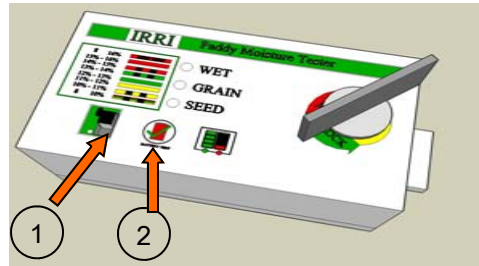
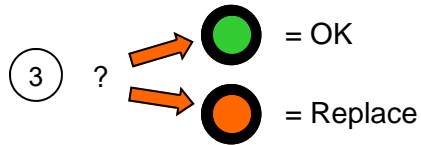


Testing the Battery

1. Turn Tester on.
2. Press Battery test button, wait for 1 second, keep pressed.

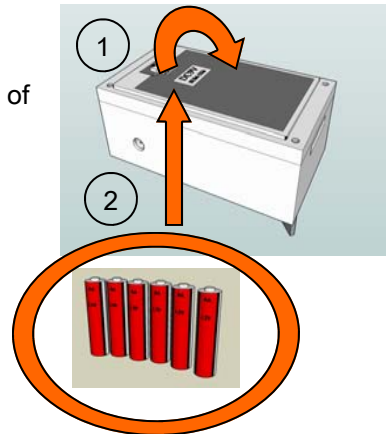


3. Read green and red LED
 - Green light -> Battery is OK
 - Red light -> Replace Battery



Replacing the Battery

1. Carefully lift off the back of the Tester,
2. Replace the battery with new 6 pieces of AA (1.5V) batteries
3. Insert the batteries in the battery case
4. Remove any impurities from inside.



For more Information



Postharvest Unit
International Rice Research Institute
Postharvest@irri.org
© IRRI, ALL RIGHTS RESERVED

A.Tenorio, 20 April 2012

IRRI Moisture Tester



Users Manual

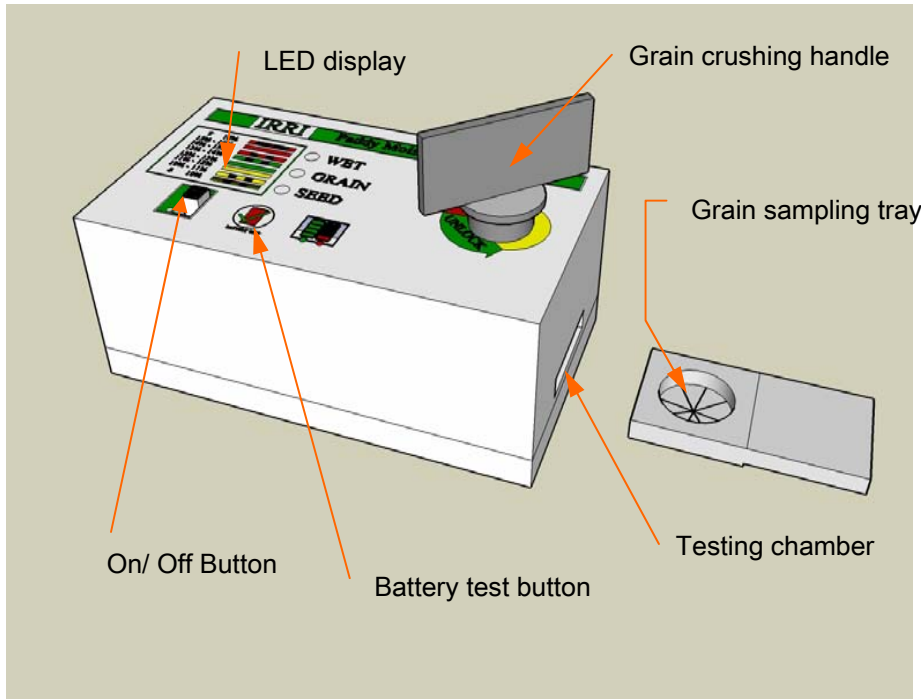
Version 3

Description

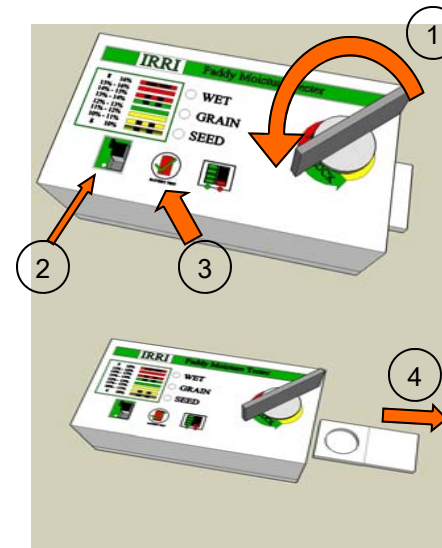
The IRRI Moisture tester is an affordable decision making tool for post harvest management of rice. The Moisture tester has three light emitting diodes (LED) that indicate that the paddy moisture content is within a certain range, a red LED for paddy that is too **WET** for safe storage and needs to be dried, a green LED for paddy **GRAIN** that is safe for storage to be used for rice milling and a yellow LED that indicates that paddy **SEED** is dry enough to maintain a high germination rate in seed storage.

Although the moisture content in percent can be assessed using the table on the next page the IRRI moisture tester is designed for postharvest operations and is **not designed to be used in trading.**

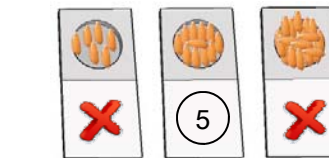
Components



Testing Moisture Content

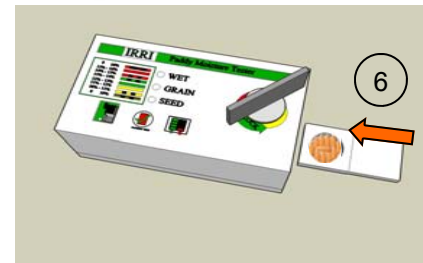


1. Open Grain crushing handle.
2. Turn Tester on.
3. Test battery (see back page).

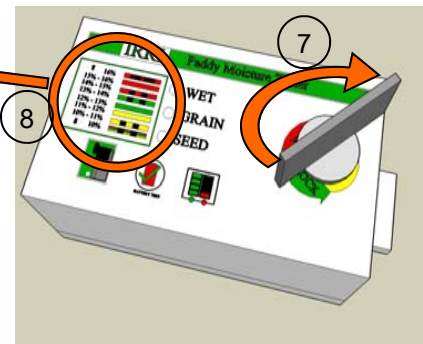


4. Remove Grain sampling tray and make sure the testing chamber is clean with no leftover grains or dirt inside.

5. Take a grain sample and place grains in one layer in the sampling tray.
Don't over fill or under fill.



6. Fully insert sampling tray into the moisture tester.



7. Crush the grains by rotating the grain crushing handle clockwise. CLOSE TIGHT to make sure that the grains are properly crushed.
8. Observe lights and get moisture range.

Moisture content ranges

LED	Display	Meaning
Beep Beep...	Red LED on + beeps	more than 16%, Out of range
	Red LED on	15-16%
	Red LED blinks	14-15%
	Green LED blinks	13-14%
	Green LED on	12-13%
	Yellow LED on	11-12%
	Yellow LED blinks	10-11%
	All LEDs blink	Out of range, open crusher